



E & A CONSULTING GROUP, INC.

Engineering Answers

10909 Mill Valley Road, Suite 100 • Omaha, NE 68154-3950

P 402.895.4700 • F 402.895.3599

www.eacg.com

Dear Homeowner:

The SID has contracted concrete work to be done on the streets in your SID. A contractor will be on site to do work which includes removing the existing concrete that is damaged and replacing it with new pavement.

Throughout the course of this project, there could be some minimal damage done to yards and or sprinkler systems. The contractor that is on site will be responsible for replacing any damaged sprinkler lines and/or heads. They will also be replacing any sod that is torn up while on site. Once the new sod is laid, it will be the responsibility of the homeowner at each lot to water the new sod until it has re-established itself.

Before starting the work on site, each contractor must put in a call and have all the utilities in the area located. You might notice some areas in your yard that have been flagged and/or spray painted. This does not indicate the area in which they will be working. It is just to give them an idea of what kind of utilities are in the area that could possibly be hit while the contractor is on site working.

All work that is completed in public Right-of-Way and follow City of Omaha and Sarpy County specifications.

The work in your SID should not take longer than 30 days to complete. Please let me know if you have any questions or concerns on this at all.

Thank You,

A handwritten signature in black ink, appearing to read 'Nelson C Flores', written over a horizontal line.

Nelson C Flores

Construction Administration Tech.

Engineering Answers...by assisting our clients

E & A Consulting Group, Inc.

10909 Mill Valley Road, Suite 100 • Omaha, NE 68154

402.895.4700 (o)

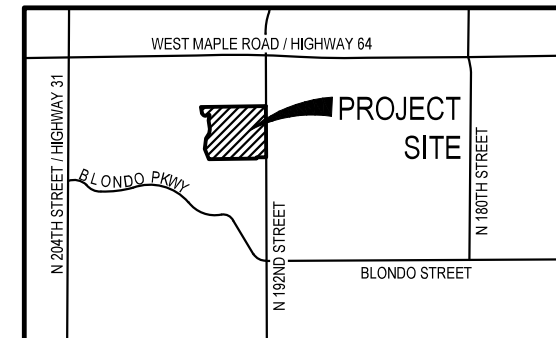
eacg.com



ELKHORN VIEW ESTATES

2024 STREET RECONSTRUCTION

SID NO. 518
DOUGLAS COUNTY, NEBRASKA



VICINITY MAP

APPROXIMATE BID QUANTITIES

ITEM	DESCRIPTION	QUANTITY	UNIT
1	CONCRETE PAVEMENT REPAIR, LARGE AREA	851	SY
2	CONCRETE PAVEMENT REPAIR, SMALL AREA	758	SY
3	FULL DEPTH SAW CUT EXISTING PAVEMENT	1,992	LF
4	ADJUST MANHOLE TO GRADE	2	EA
5	REMOVE PCC SIDEWALK	92	SF
6	REMOVE PCC CURB RAMP	40	SF
7	CONSTRUCT PCC SIDEWALK	104	SF
8	CONSTRUCT PCC CURB RAMP	36	SF
9	CONSTRUCT DETECTABLE WARNING PANEL (1 Locations)	8	SF
10	REMOVE AND REPLACE FAULTY SUBGRADE	25	TN
11	ADJUST SPRINKLER (AS NEEDED)	1	EA



INDEX OF SHEETS

SHEET NO.	DESCRIPTION
1	COVER
2	NORTH
3	SOUTH
4	TOTAL QUANTITIES
5	COMPOSITE MAP



NOTE TO BIDDERS

- All project procedures, materials, bonds and reserves shall conform to the City of Omaha's Standard Specifications for Public Works Construction, 2024 Edition ("Standard Specifications"). It is the responsibility of the CONTRACTOR to be familiar with the contents of the Standard Specifications. The Standard Specifications can be found at: <https://publicworks.cityofomaha.org/contractors-consultants2/contractors/standard-plates-curb-ramps-and-specifications>
- References to "Standard Plates" refers to the City of Omaha's 2024 Standard Plate list. These Standard Plates can be found at: <https://publicworks.cityofomaha.org/2024-standard-plate>

The CONTRACTOR is referred to the following Standard Plates for use on this project:

PLATE NO.	DESCRIPTION	REVISION DATE
503-01	Sidewalk Construction	02/13/2024
504-01-1	Concrete Curb Ramp	02/13/2024
1002-02-1, 3, 4	Pavement Repair	02/13/2024

APPLICANT

SID 518
Geoff Stewart, Chairman
11440 West Center Road, Ste. C
Omaha, NE 68144
P: 402.334.0700
F: 402.334.0815
bbeller@fdjlaw.com

DESIGNER

E & A Consulting Group, Inc
Teresa Wooten, P.E.
10909 Mill Valley Road, Suite 100
Omaha, NE 68154
P: 402.895.4700
F: 402.895.3599
twooten@eacg.com

INSPECTOR

E & A Consulting Group, Inc
Randall L. Pierce, P.E.
10909 Mill Valley Road, Suite 100
Omaha, NE 68154
P: 402.895.4700
F: 402.895.3599
rpierce@eacg.com

CONTRACTOR

E & A CONSULTING GROUP, INC.
Engineering • Planning • Environmental & Field Services
10909 Mill Valley Road, Suite 100 • Omaha, NE 68154
Phone: 402.895.4700 • Fax: 402.895.3599
www.eacg.com
State of NE Certificate of Authorization #CA0008

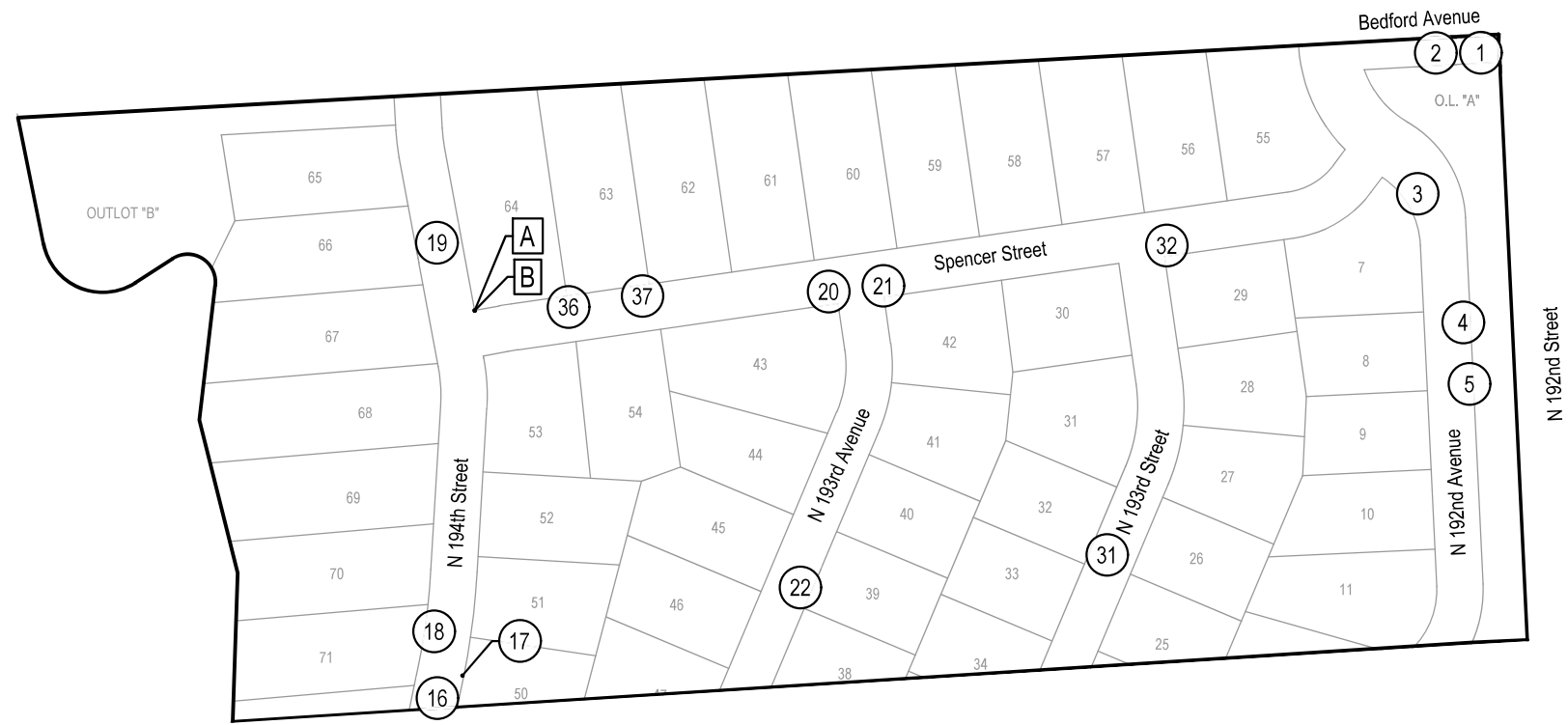


ELKHORN VIEW ESTATES
2024 STREET
RECONSTRUCTION
SID 518
DOUGLAS COUNTY, NEBRASKA

COVER

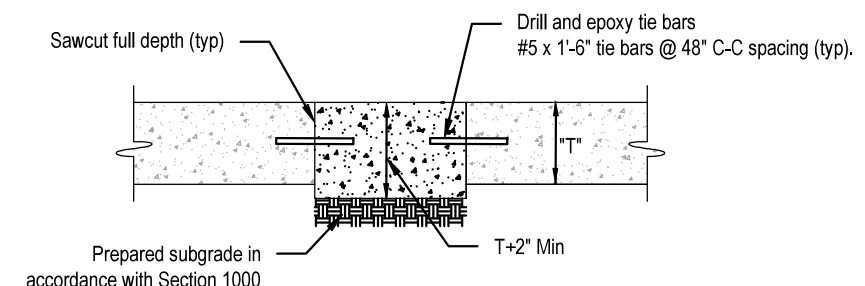
Revisions	Date	Description
1	5/29/2024	TAM
2		ESB

Proj No: P2024245012
Date: 5/29/2024
Designed By: TAM
Drawn By: ESB
Scale: 1" = 300'
Sheet: 1 of 5



2024 STREET RECONSTRUCTION									
AREA NO.	NO. POURS	SAW CUT L.F.	CURB L.F.	WIDTH	X	LENGTH	LARGE AREA EST S.Y.	SMALL AREA EST S.Y.	NOTES
1	1	85	35	13.0	x	12.0		17.3	
				11.0	x	11.0		13.4	
2	1	82	15	20.0	x	15.0		33.3	
				5.0	x	15.0		8.3	
3	1	55	30	12.5	x	30.0		41.7	
4	2	80	120	25.0	x	45.0	125.0		
				12.5	x	30.0	41.7		
5	1	26		20.0	x	3.0		6.7	Curb Inlet Throat
16	1	55	15	12.5	x	30.0		41.7	
17	1	26		20.0	x	3.0		6.7	Curb Inlet Throat
18	1	70	45	12.5	x	45.0	62.5		
19	1	40	15	12.5	x	15.0		20.8	
20	1	46	14	15.5	x	15.0		25.8	
21	2	83	60	25.0	x	45.0	125.0		
22	1	55	30	12.5	x	30.0		41.7	
31	1	45	15	12.5	x	15.0		20.8	
32	1	76	10	12.5	x	30.0		41.7	
36	1	55	30	12.5	x	30.0		41.7	
37	1	50	30	15.0	x	25.0		41.7	

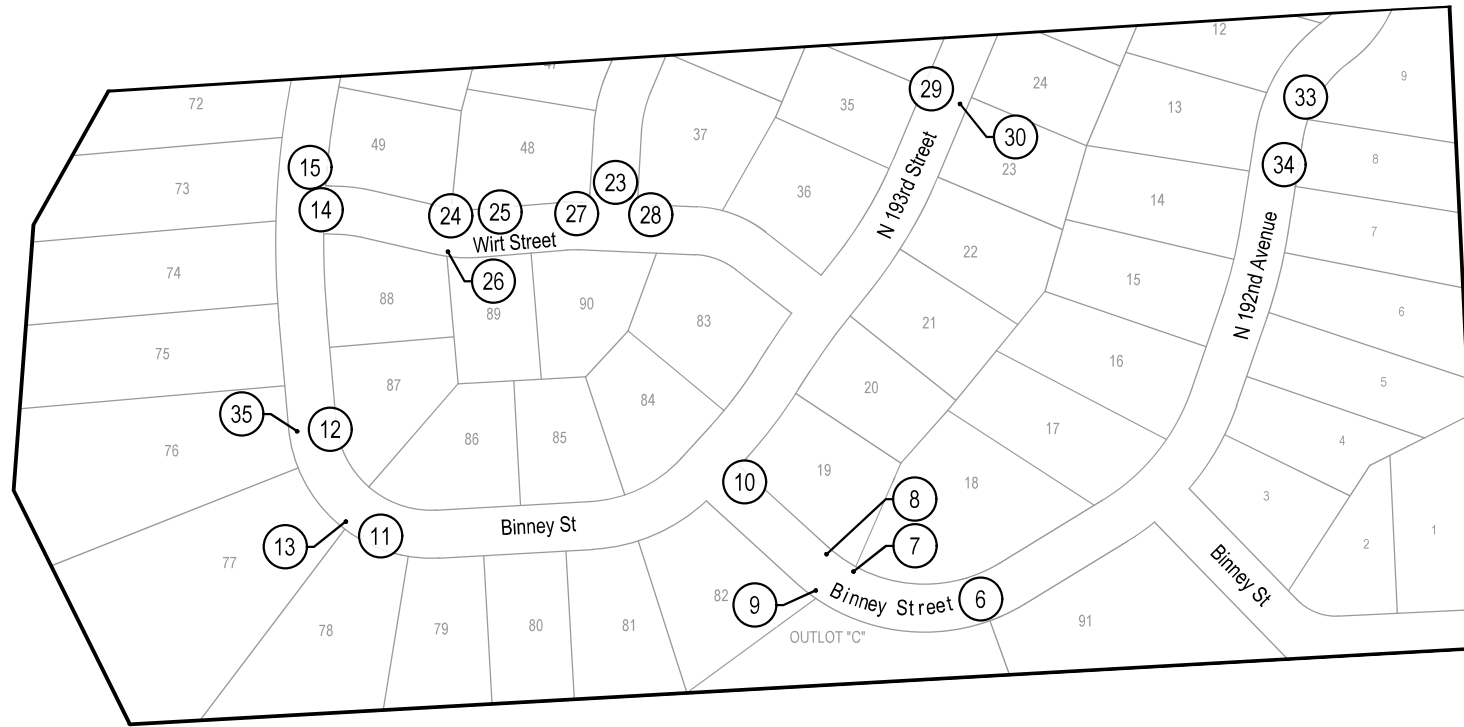
2024 STREET RECONSTRUCTION					
AREA NO.	TYPE	APPROX. DIMEN.		EST S.F.	NOTES
A	Curb Ramp	8.0	x 5.0	40.0	REMOVE
	Curb Ramp	6.0	x 6.0	36.0	CONSTRUCT, ADA Plate - Cast Iron
B	Sidewalk	4.0	x 23.0	92.0	REMOVE
	Sidewalk	4.5	x 23.0	103.5	CONSTRUCT, Adjust Manhole, Adjust Sprinkler (as needed)



SMALL AREA CONCRETE PAVEMENT REPAIR DETAIL
NOT TO SCALE

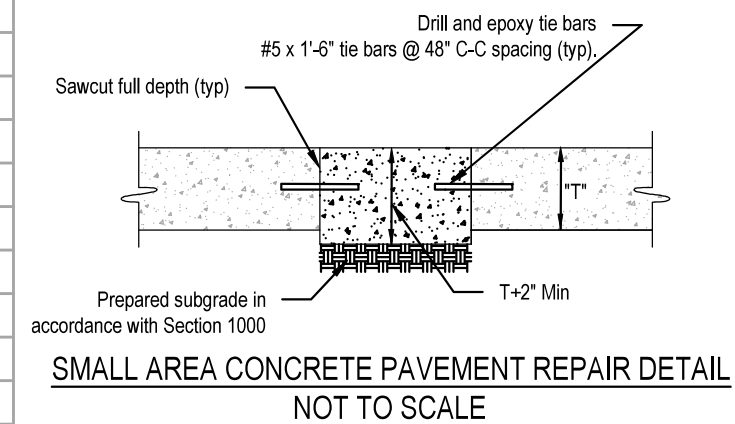


ne1call.com Nebraska 811 know what's below. Dial 811 Call before you dig.	
E & A CONSULTING GROUP, INC. Engineering • Planning • Environmental & Field Services <small>10809 Mill Valley Road, Suite 100 • Omaha, NE 68154 Phone: 402.265.4700 • Fax: 402.265.2559 www.eaeg.com State of NE Certificate of Authorization #CA0008</small>	
ELKHORN VIEW ESTATES 2024 STREET RECONSTRUCTION <small>SID 518 DOUGLAS COUNTY, NEBRASKA</small>	
NORTH	
Revisions Date Description 5/29/2024 TMM 5/29/2024 ESN Scale: T = 20' Sheet: 2 of 5	Project No: E2024245A12 Date: 5/29/2024 Design: TMM Drawn: ESN Scale: T = 20' Sheet: 2 of 5



2024 STREET RECONSTRUCTION									
AREA NO.	NO. POURS	SAW CUT L.F.	CURB L.F.	WIDTH	X	LENGTH	LARGE AREA EST S.Y.	SMALL AREA EST S.Y.	NOTES
6	1	80	30	25.0	x	30.0	83.3		Adjust Manhole
7	2	69	30	23.0	x	25.0	63.9		
				12.5	x	30.0	41.7		
8	1	23		20.0	x	3.0		6.7	Curb Inlet Throat
9	1	23		20.0	x	3.0		6.7	Curb Inlet Throat
10	1	40	15	12.5	x	15.0		20.8	
11	1	55	30	12.5	x	30.0		41.7	
12	1	55	30	12.5	x	30.0		41.7	
13	1	55	30	12.5	x	30.0		41.7	
14	2	95	22	12.5	x	38.0	52.8		
				15.5	x	15.0	25.8		

2024 STREET RECONSTRUCTION										
AREA NO.	NO. POURS	SAW CUT L.F.	CURB L.F.	WIDTH	X	LENGTH	LARGE AREA EST S.Y.	SMALL AREA EST S.Y.	NOTES	
15	1	50		12.5	x	15.0		20.8		
23	2	50	30	25.0	x	15.0		41.7		
24	1	23		20.0	x	3.0		6.7	Curb Inlet Throat	
25	1	75	30	12.5	x	45.0	62.5			
26	1	26		20.0	x	3.0		6.7	Curb Inlet Throat	
27	1	85	60	12.5	x	60.0	83.3			
28	2	50	60	25.0	x	30.0	83.3			
29	1	26		20.0	x	3.0		6.7	Curb Inlet Throat	
30	1	26		20.0	x	3.0		6.7	Curb Inlet Throat	
33	1	55	30	12.5	x	30.0		41.7		
34	1	37	12	12.5	x	12.0		16.7		
35	1	55	30	12.5	x	30.0		41.7		



E & A CONSULTING GROUP, INC.
Engineering • Planning • Environmental & Field Services

10809 Mill Valley Road, Suite 100 • Omaha, NE 68154
Phone: 402.656.4700 • Fax: 402.656.2599
www.eaeg.com
State of NE Certificate of Authorization #CA0008

ELKHORN VIEW ESTATES
2024 STREET
RECONSTRUCTION

SID 518
DOUGLAS COUNTY, NEBRASKA

SOUTH

Revisions	Date	Description
1	5/29/2024	TAM
		ESB

Proj No: E202425412
Date: 5/29/2024
Designed By: TAM
Drawn By: ESB
Scale: T = 20'
Sheet: 3 of 3

5/29/2024 10:08 AM K:\Projects\2004\245\p12\Engineering\CAD Files\Paving\Elkhorn View Estates 2024 Street Reconstruction-000.dwg

Evan Nelson



2024 STREET RECONSTRUCTION									
AREA NO.	NO. POURS	SAW CUT L.F.	CURB L.F.	WIDTH	X	LENGTH	LARGE AREA EST S.Y.	SMALL AREA EST S.Y.	NOTES
1	1	85	35	13.0	x	12.0		17.3	
				11.0	x	11.0		13.4	
2	1	82	15	20.0	x	15.0		33.3	
				5.0	x	15.0		8.3	
3	1	55	30	12.5	x	30.0		41.7	
4	2	80	120	25.0	x	45.0	125.0		
				12.5	x	30.0	41.7		
5	1	26		20.0	x	3.0		6.7	Curb Inlet Throat
6	1	80	30	25.0	x	30.0	83.3		Adjust Manhole
7	2	69	30	23.0	x	25.0	63.9		
				12.5	x	30.0	41.7		
8	1	23		20.0	x	3.0		6.7	Curb Inlet Throat
9	1	23		20.0	x	3.0		6.7	Curb Inlet Throat
10	1	40	15	12.5	x	15.0		20.8	
11	1	55	30	12.5	x	30.0		41.7	
12	1	55	30	12.5	x	30.0		41.7	
13	1	55	30	12.5	x	30.0		41.7	
14	2	95	22	12.5	x	38.0	52.8		
				15.5	x	15.0	25.8		
15	1	50		12.5	x	15.0		20.8	
16	1	55	15	12.5	x	30.0		41.7	
17	1	26		20.0	x	3.0		6.7	Curb Inlet Throat
18	1	70	45	12.5	x	45.0	62.5		
19	1	40	15	12.5	x	15.0		20.8	
20	1	46	14	15.5	x	15.0		25.8	
21	2	83	60	25.0	x	45.0	125.0		
22	1	55	30	12.5	x	30.0		41.7	
23	2	50	30	25.0	x	15.0		41.7	
24	1	23		20.0	x	3.0		6.7	Curb Inlet Throat
25	1	75	30	12.5	x	45.0	62.5		

2024 STREET RECONSTRUCTION									
AREA NO.	NO. POURS	SAW CUT L.F.	CURB L.F.	WIDTH	X	LENGTH	LARGE AREA EST S.Y.	SMALL AREA EST S.Y.	NOTES
26	1	26		20.0	x	3.0		6.7	Curb Inlet Throat
27	1	85	60	12.5	x	60.0	83.3		
28	2	50	60	25.0	x	30.0	83.3		
29	1	26		20.0	x	3.0		6.7	Curb Inlet Throat
30	1	26		20.0	x	3.0		6.7	Curb Inlet Throat
31	1	45	15	12.5	x	15.0		20.8	
32	1	76	10	12.5	x	30.0		41.7	
				15.0	x	4.0		6.7	
33	1	55	30	12.5	x	30.0		41.7	
34	1	37	12	12.5	x	12.0		16.7	
35	1	55	30	12.5	x	30.0		41.7	
36	1	55	30	12.5	x	30.0		41.7	
37	1	50	30	15.0	x	25.0		41.7	

2024 STREET RECONSTRUCTION						
AREA NO.	TYPE	APPROX. DIMEN.		EST S.F.	NOTES	
A	Curb Ramp	8.0	x 5.0	40.0	REMOVE	
	Curb Ramp	6.0	x 6.0	36.0	CONSTRUCT, ADA Plate - Cast Iron	
B	Sidewalk	4.0	x 23.0	92.0	REMOVE	
	Sidewalk	4.5	x 23.0	103.5	CONSTRUCT, Adjust Manhole, Adjust Sprinkler (as needed)	



E & A CONSULTING GROUP, INC. Engineering • Planning • Environmental & Field Services <small>10809 Mill Valley Road, Suite 100 • Omaha, NE 68154 Phone: 402.656.4700 • Fax: 402.656.2599 www.eandagroup.com State of NE Certificate of Authorization: PCA0008</small>	 E & A CONSULTING GROUP, INC. Engineering Answers	ELKHORN VIEW ESTATES 2024 STREET RECONSTRUCTION <small>SID 518 DOUGLAS COUNTY, NEBRASKA</small>				
TOTAL QUANTITIES						
Proj No: E202425412 Date: 5/29/2024 Designed By: TMM Drawn By: ESB Scale: N/A Sheet: 4 of 8	Revisions <table border="1" style="width: 100%; border-collapse: collapse;"> <tr> <th style="width: 10%;">Date</th> <th style="width: 90%;">Description</th> </tr> <tr> <td> </td> <td> </td> </tr> </table>	Date	Description			5/29/2024 10:08 AM K:\Projects\2004\245\p12\Engineering\CAD Files\Paving\Elkhorn View Estates 2024 Street Reconstruction-000.dwg Evan Nelson
Date	Description					



Revisions	Date	Description
1	5/29/2024	TAM
2		ESB

Proj No: P2024245412
 Date: 5/29/2024
 Designed By: TAM
 Drawn By: ESB
 Scale: T = 20'
 Sheet: 5 of 5

COMPOSITE MAP

**ELKHORN VIEW ESTATES
 2024 STREET
 RECONSTRUCTION**
 SID 518
 DOUGLAS COUNTY, NEBRASKA



E & A CONSULTING GROUP, INC.
 Engineering • Planning • Environmental & Field Services
 10809 Mill Valley Road, Suite 100 • Omaha, NE 68154
 Phone: 402.265.4700 • Fax: 402.265.2599
 www.eaeg.com
 State of NE Certificate of Authorization #CA0008